



## Johnson County Commission

**William H. Gabel**  
Presiding Commissioner

**John L. Marr**  
Commissioner, Eastern District

**Charles Kavanaugh**  
Commissioner, Western District

**Diane Thompson**  
County Clerk

June 18, 2020

### **BID INVITATION: Johnson County Road and Bridge – Chip and Seal**

**BID INVITATION** The Johnson County Commission is requesting proposals for Triple Layer Chip and Seal. The surface to be chipseal is approximately ten (10) or more miles long in various locations, twenty-two (22) feet wide. Johnson County will complete the base grading prior to the chip and seal installation.

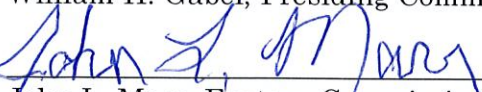
**SPECIFICATIONS** General information, submittal specifications, and additional requirements can be obtained by visiting [www.jococourthouse.com](http://www.jococourthouse.com) or contacting the Johnson County Clerk's Office, [JPowers@jococourthouse.com](mailto:JPowers@jococourthouse.com) Johnson County Courthouse, 300 N. Holden, Suite 205, Warrensburg, MO or calling (660) 747-6161.

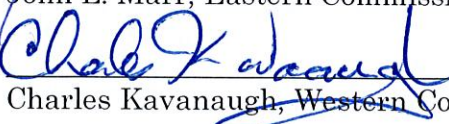
**SUBMISSION** Sealed proposals will be accepted in the County Clerk's Office (Johnson County Courthouse, County Clerk, 300 N Holden, Suite 205, Warrensburg, MO 64093) no later than 1:30 p.m. on Thursday, July 9, 2020 at which time proposals will be opened in the Commissioner's Office. The words "**CHIP AND SEAL BID—DO NOT OPEN**" must be clearly marked on the outside of the envelope containing said proposal. The proposal should include the completed Bid Submittal Form.

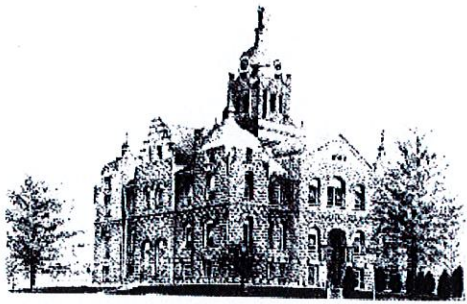
**BID AWARD** The County Commission reserves the right to reject any and/or all bids and may select the bid which they determine to be most advantageous.

### **JOHNSON COUNTY COMMISSION**

  
\_\_\_\_\_  
William H. Gabel, Presiding Commissioner

  
\_\_\_\_\_  
John L. Marr, Eastern Commissioner

  
\_\_\_\_\_  
Charles Kavanaugh, Western Commissioner



**Johnson County Commission**

**William H. Gabel**  
Presiding Commissioner

**John L. Marr**  
Commissioner, Eastern District

**Charles Kavanaugh**  
Commissioner, Western District

**Diane Thompson**  
County Clerk

June 18, 2020

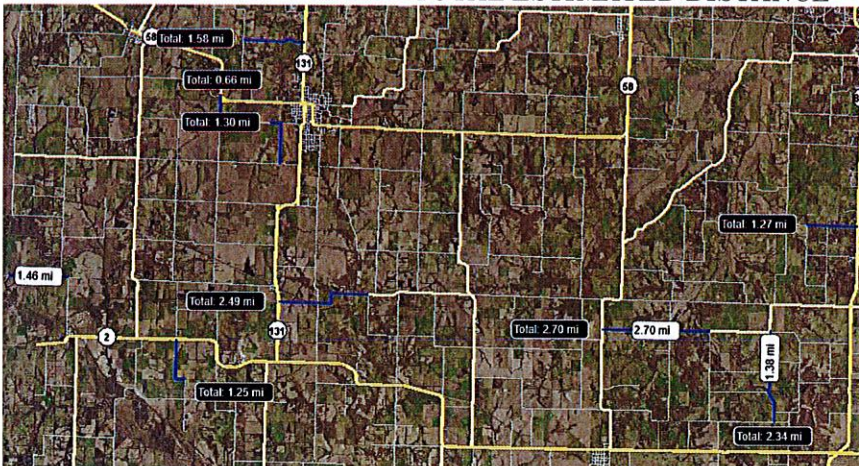
**BID SPECIFICATIONS: Johnson County Road and Bridge – Chip and Seal Page 1 of 2**

**BID INVITATION** The Johnson County Commission is requesting proposals for Triple Layer Chip and Seal. The surface to be chipseal is approximately ten (10) or more miles long in various locations, twenty-two (22) feet wide. Johnson County will complete the base grading prior to the chip and seal installation.

**SPECIFICATIONS**

- Oil
- Prime Oil=AEP
- Chipseal oil CRS2
- Process: Contractor applies 0.25 gal of AEP per sq yd on road for base prime
- 1<sup>st</sup> layer will have 0.38 gal per sq yd of CRS2 applied to roadway then 5/8 clean rock covering the oil. That layer will be rolled.
- After rolling is done a second layer will be applied of CRS2 shot at 0.40 gal per sq yd then covered with 5/8 clean rock, rolled then a third layer applied with the CRS2 oil shot at 0.38 gal per sq yd covered with 3/8 clean rock and rolled

<b>Road</b>	<b>Location</b>	<b>Estimated Feet</b>
SW 600 Road	13 Highway to SW 51 Raod	6,727.12
SW 151 Road	JJ Highway to SW 1025 Road	12,618.40
SW 850 Road	End of JJ Highway to F Highway	14,284.48
SW 800 / 825 Road	131 Highway to end of KK Highway	13,170.72
SW 1651 Road	2 Highway South to end chip and seal	6,655.25
SW 800 / 1871 Road	SW 1921 to County Line	7,688.93
SW 1351	SW 500 to NW 400	5,370.96
SW 400	SW 1351 to end chip and seal	1,452.34
SW 1501	58 Highway to SW 400	4,088.04
SW 200	131 Highway to SW 1451	8,327
<b>TOTAL ESTIMATED DISTANCE</b>		<b>80,383.24 (15.22 miles)</b>



Complete and submit the Bid Submittal Form which includes:

- Price(s) per square yard laid (including all overhead, mobilization, labor, heating, depreciation and all other costs associated with the chip sealing process)
- Estimated start date
- Estimated date of completion

**BID REQUIREMENTS**

**PREVAILING WAGE** Approved Bidder will comply with all prevailing wage laws, if applicable. Approved Bidder agrees to indemnify Johnson County of all labor law violations committed by the approved bidder. Missouri Department of Labor and Industrial Relations Affidavit Compliance with the Prevailing Wage Law - Annual Wage Order No. 25, Section 051, Johnson County

**BONDS** Approved Bidder must submit bid, payment and performance bonds as required by law for the protection of Approved Bidder and Owner during the performance of the Work.

**INSURANCE** Approved Bidder must submit to Owner an insurance certificate for comprehensive general public liability and workman’s compensation coverage with respect to the premise having limits of liability for bodily injury, death, and property damage of not less than a combined single limit of \$1,000,000 per occurrence and \$2,000,000 aggregate, written on an occurrence basis, this certificate must name the Owner and additional insured as identified by the Owner.

**DELIVERY** Approved Bidder shall furnish a load ticket with each load of oil and rock delivered, including such information as may be necessary to determine accurate dates and quantities of material delivered to individual locations in Johnson County.

**COORDINATION** The Johnson County Road and Bridge Department will prepare the base surface in advance of the application. The Approved Bidder will closely coordinate this work with the Road and Bridge Supervisor.

**FAIR EMPLOYMENT PRACTICES** The Approved Bidder agrees they will not discriminate against any employee or applicant for employment, to be employed in the performance of this contract with respect to their hire, tenure, terms, conditions or privileges of employment or any matter directly or indirectly related to employment because of their age, (except when based on a bona fide occupation qualification), or because of their race, color, religion, national origin, ancestry, sex, height, weight, marital status, veteran status or handicap unrelated to the ability to perform the duties of a particular job. (Act No. 251 P.A. 1955, as amended).

**PROTECTION AND RESTORATION OF PROPERTY** Approved Bidder shall restore, at their expense, any public or private property damaged or injured in consequence of any act or omission on their part or on the part of their employees or agents to a condition similar and equal to that existing before such damage or injury was done. If the contractor neglects to repair or make restorations, the Road and Bridge Supervisor may, after 48 hour notice to the contractor, proceed to make such repairs or restorations and will deduct the cost thereof from any monies that are or may become due to the contractor.

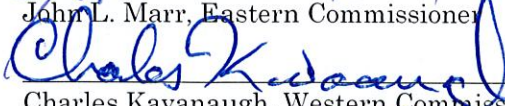
**SUBMISSION** Sealed proposals will be accepted in the County Clerk’s Office (Johnson County Courthouse, County Clerk, 300 N Holden, Suite 205, Warrensburg, MO 64093) no later than 1:30 p.m. on Thursday, July 9, 2020 at which time proposals will be opened in the Commissioner’s Office. The words “**CHIP AND SEAL BID—DO NOT OPEN**” must be clearly marked on the outside of the envelope containing said proposal. The proposal should include the completed Bid Submittal Form.

**BID AWARD** The County Commission reserves the right to reject any and/or all bids and may select the bid which they determine to be most advantageous.

**JOHNSON COUNTY COMMISSION**

  
\_\_\_\_\_  
William H. Gabel, Presiding Commissioner

  
\_\_\_\_\_  
John L. Marr, Eastern Commissioner

  
\_\_\_\_\_  
Charles Kavanaugh, Western Commissioner

# Bid Form: Johnson County Road and Bridge Department – Chip and Seal

Bid Opening: Thursday, July 9, 2020 at 1:30 p.m.

## Bidder Information

Bidder: \_\_\_\_\_

Bidder's Address: \_\_\_\_\_

Street Address: \_\_\_\_\_

City, State, Zip: \_\_\_\_\_

Phone / Fax / Email: \_\_\_\_\_

1. Do you agree to comply with all specifications and requirements as identified in the Bid Specifications?  
 YES  NO
2. Do you agree to comply with Missouri Department of Labor and Industrial Relations Affidavit Compliance with the Prevailing Wage Law - Annual Wage Order No. 25, Section 051, Johnson County?  
 YES  NO
3. Is your bid bond included in the submission packet?  YES  NO
4. Do you agree to furnish a load ticket with each load of oil and rock delivered, including such information as may be necessary to determine accurate dates and quantities of material delivered to individual locations in Johnson County?  YES  NO
5. Do you understand the work will be done in various locations throughout the County?  YES  NO
6. Price(s) per square yard laid (including all overhead, mobilization, labor, heating, depreciation and all other costs associated with the chip and sealing process): \$ \_\_\_\_\_ per square yard
7. Estimated Start Date: \_\_\_\_\_
8. Estimated Date of Completion: \_\_\_\_\_

## Explanation / Notes

## Submission of Bid

Respectfully submitted this \_\_\_\_\_ day of \_\_\_\_\_, 2020

Submitted By: \_\_\_\_\_ (Insert name of bidding firm or corporation)

Authorized Signature: \_\_\_\_\_ (Handwritten signature)

Signed By: \_\_\_\_\_ (Type or print name)

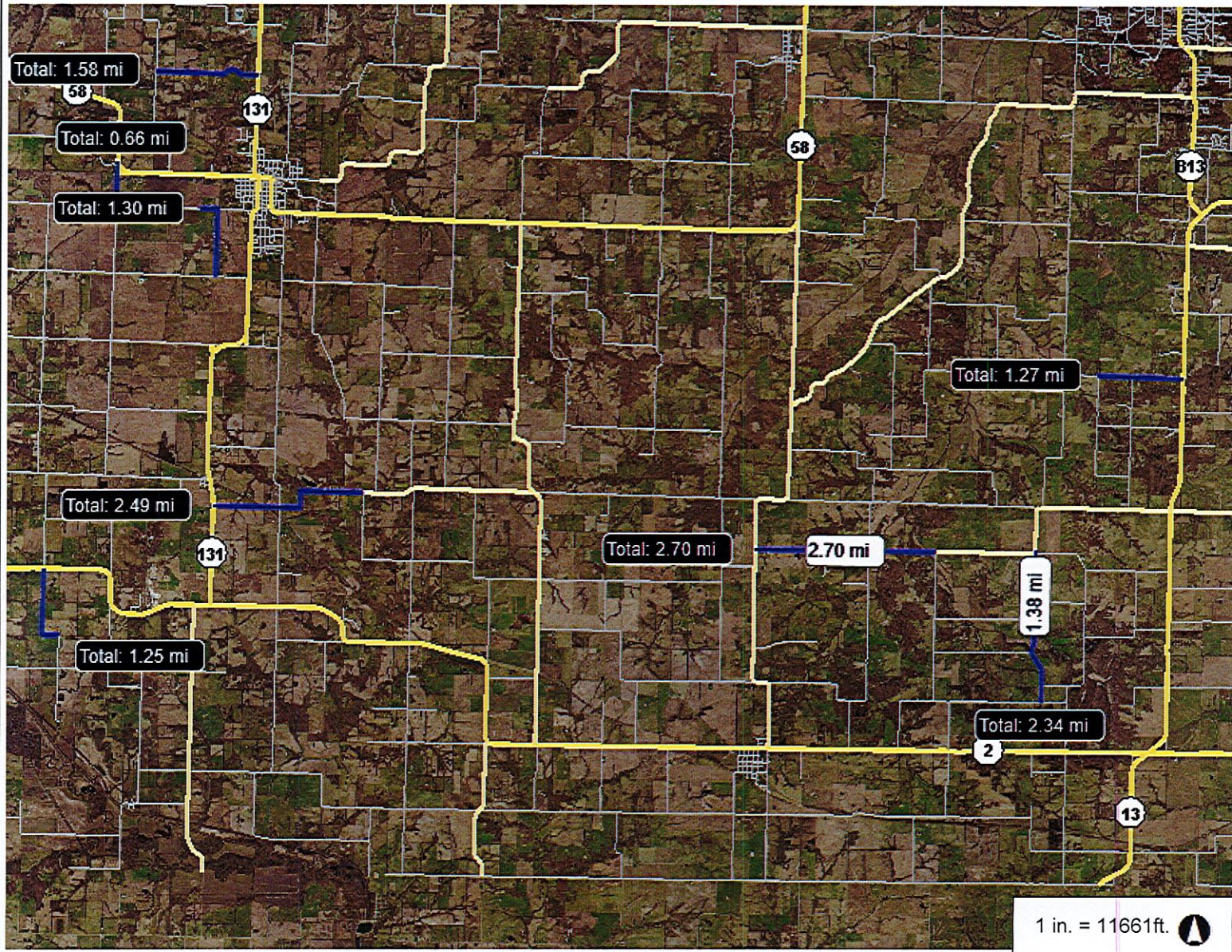
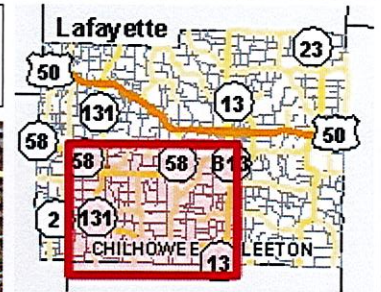
Title: \_\_\_\_\_ (Owner/Partner/President/Vice President)

**SUBMISSION** Sealed proposals will be accepted in the County Clerk's Office (Johnson County Courthouse, County Clerk, 300 N Holden, Suite 205, Warrensburg, MO 64093) no later than 1:30 p.m. on Thursday, July 9, 2020 at which time proposals will be opened in the Commissioner's Office. The words "**CHIP AND SEAL BID—DO NOT OPEN**" must be clearly marked on the outside of the envelope containing said proposal. The proposal should include the completed Bid Submittal Form.

**BID AWARD** The County Commission reserves the right to reject any and/or all bids and may select the bid which they determine to be most advantageous.

END OF DOCUMENT: Bid Form

# Johnson County, MO



## Legend

- 911 Roads
- <all other values>
- U.S. Highway
- Numbered State Highway
- Lettered State Highway

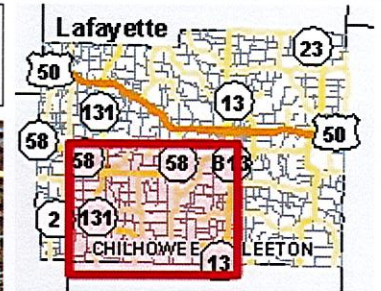
## Notes

1 in. = 11661ft. 

23,321.1      0      11,660.53      23,321.1 Feet

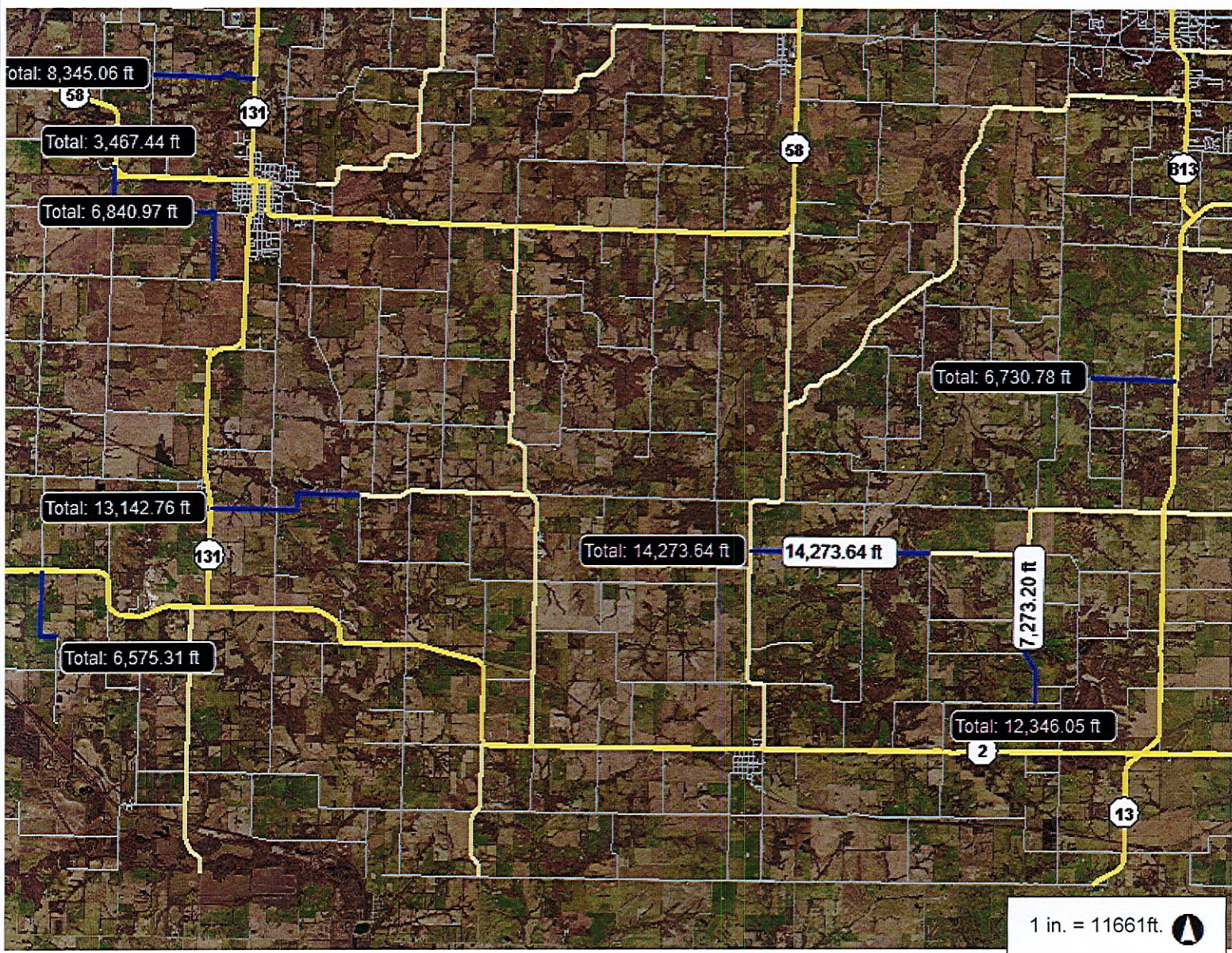
This Cadastral Map is for informational purposes only. It does not purport to represent a property boundary survey of the parcels shown and shall not be used for conveyances or the establishment of property boundaries.  
THIS MAP IS NOT TO BE USED FOR NAVIGATION

# Johnson County, MO

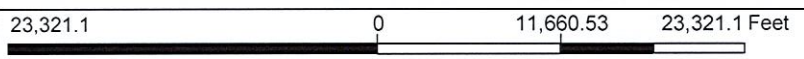


## Legend

- 911 Roads
- <all other values>
  - U.S. Highway
  - Numbered State Highway
  - Lettered State Highway



1 in. = 11661ft.



This Cadastral Map is for informational purposes only. It does not purport to represent a property boundary survey of the parcels shown and shall not be used for conveyances or the establishment of property boundaries.  
THIS MAP IS NOT TO BE USED FOR NAVIGATION

## Notes